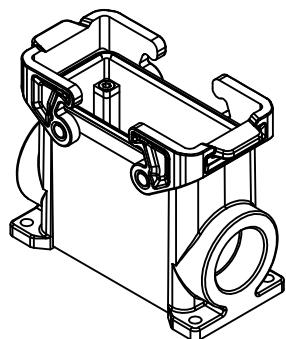
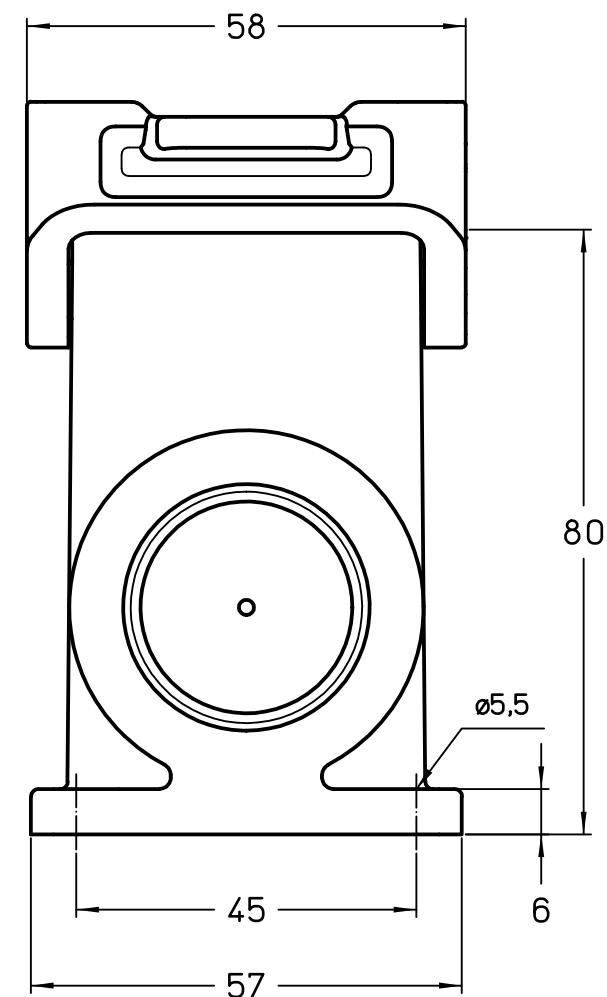
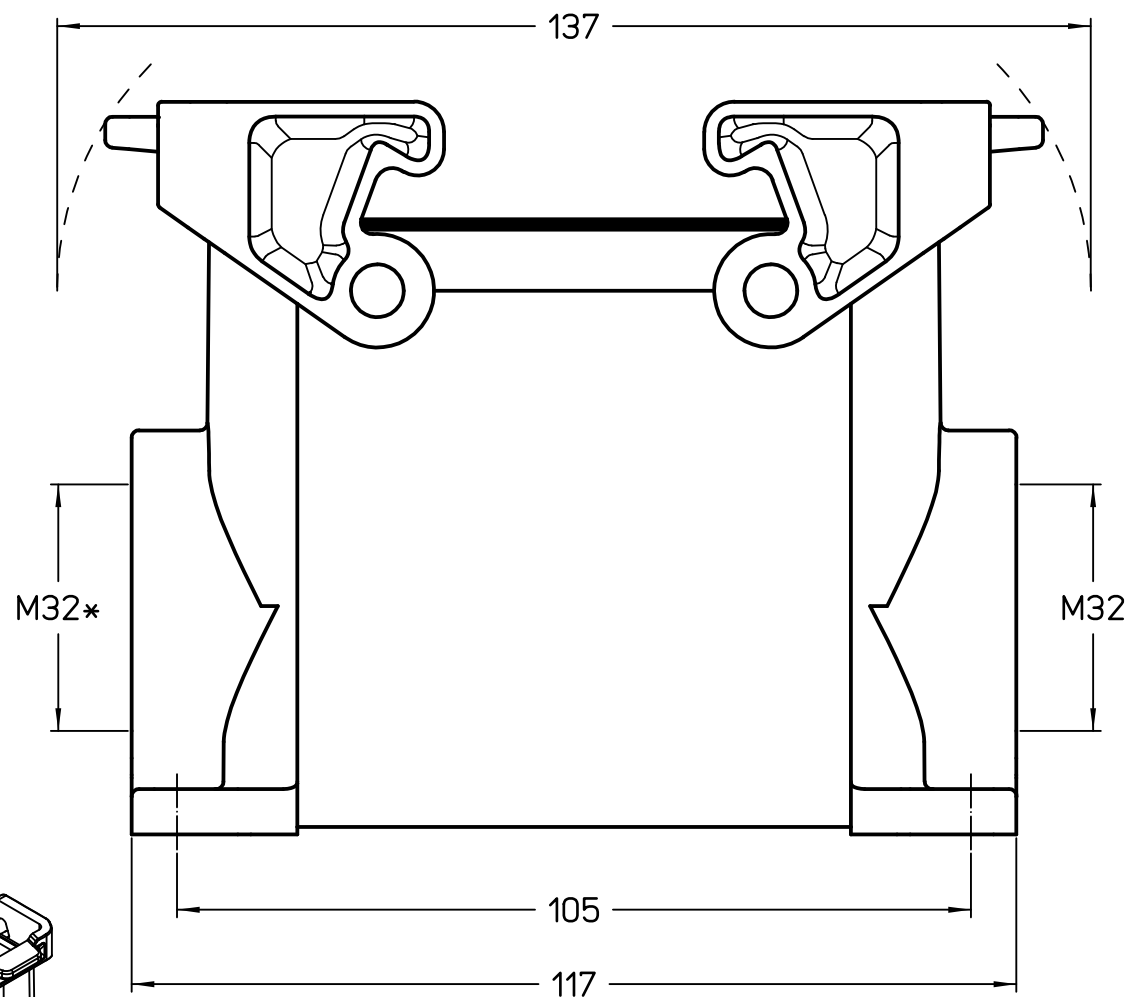


* closed hole



| | |
|------------------|---------------------|
| | Dimensions in mm |
| Original Size A4 | |
| Date 15/02/22 | |
| Sign. G. Renna | |

Simplified representation with dimensions without tolerance

TAPC 16.32

Insulating surface mounting housing, size "77.27", 1x M32 side entry,
with 2 levers - HYGIENIC-COLD

Scale
1:1

